



SMOP

FLOOR CLEANER



SMOPTM
THE NEW AGE SPRAY MOP

Instruction manual

YOUR PARTNER FOR A HEALTHY LIFE **SINCE 1901**

Dear Customer,
We share your concern in keeping your home cleaner, fresher and healthier- for your family.
Congratulations! On your choice of your cleaning help and welcome to the healthy world of Lux. Your Lux SMOP™ is a new age spray mop, with instant spray action, provides you better cleaning, removes more dirt, dust, grime and bacteria in every swipe. It's to make cleaning your home more fast and efficient, effortless cleaning without bending.

Happy SMOPPING!

GETTING STARTED WITH LUX SMOP™



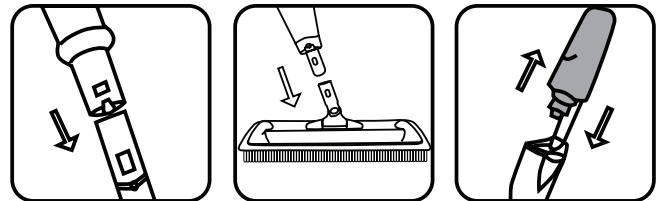
INSTRUCTION TO USE

Assembly of the spray mop:

1. Line up the handle clip of the top part of the handle with the receptor hole on the middle part of the handle and slide the two pieces towards each other until they click securely together. Repeat the steps to connect the lower of the SMOP™ with the base section of the spray mop.

How to refill the bottle:

2. Pull the bottle out from the base section of the spray mop. Undo the lid and fill the spray bottle with water or add a cleaning solution if desired.
3. Place the bottle with the lid down and insert it into the base section of the spray mop so that it locks securely in place.

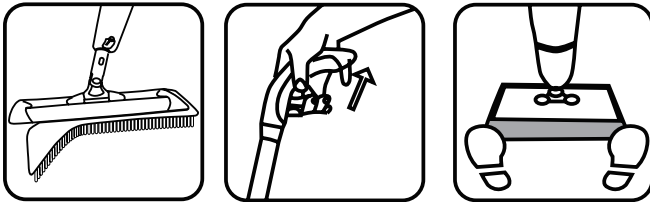


To attach the microfiber pad:

- Place the microfiber pad on the floor with the cleaning surface down. Place the head of the spray mop onto the back of the microfiber pad and push down to secure it.
- Operate the spray mechanism by pulling the handle trigger as required.

To remove the microfiber pad

- To remove the pad, put the spray mop head flat on the floor. Place your foot on both ends of the pad and pull the spray mop head away from the pad.



CARE & MAINTENANCE

Cleaning the mop pad

- Mop pads can be hand washed in luke warm water or in washing machine with a mild detergent if required.
- Let dry in the open air.

Attention:

- Never use bleach or fabric softener
- Do not iron the pads.
- If machine washing or machine drying the mop pad, place it in a garment bag to avoid it picking up fabrics from other cloths.
- Empty all water from the water bottle when not in use for a long time.
- Carefully remove the mop pad from the mop head. Wipe all surfaces of SMOP™ with soft cloth.
- Store upright in a protected, dry area.

SAFETY INSTRUCTIONS

- Never use the Lux SMOP™ on surfaces not suitable for wet mopping. Ideal for glass, wooden and tiled surfaces
- Store the Lux SMOP™ on a flat and stable surface.
- Use extra care when cleaning on stairs. Wet floor might be slippery.



Lux International AG

Seestrasse 39

8700 Kuesnacht

Switzerland

E: contact@luxinternational.com

W: www.luxinternational.com